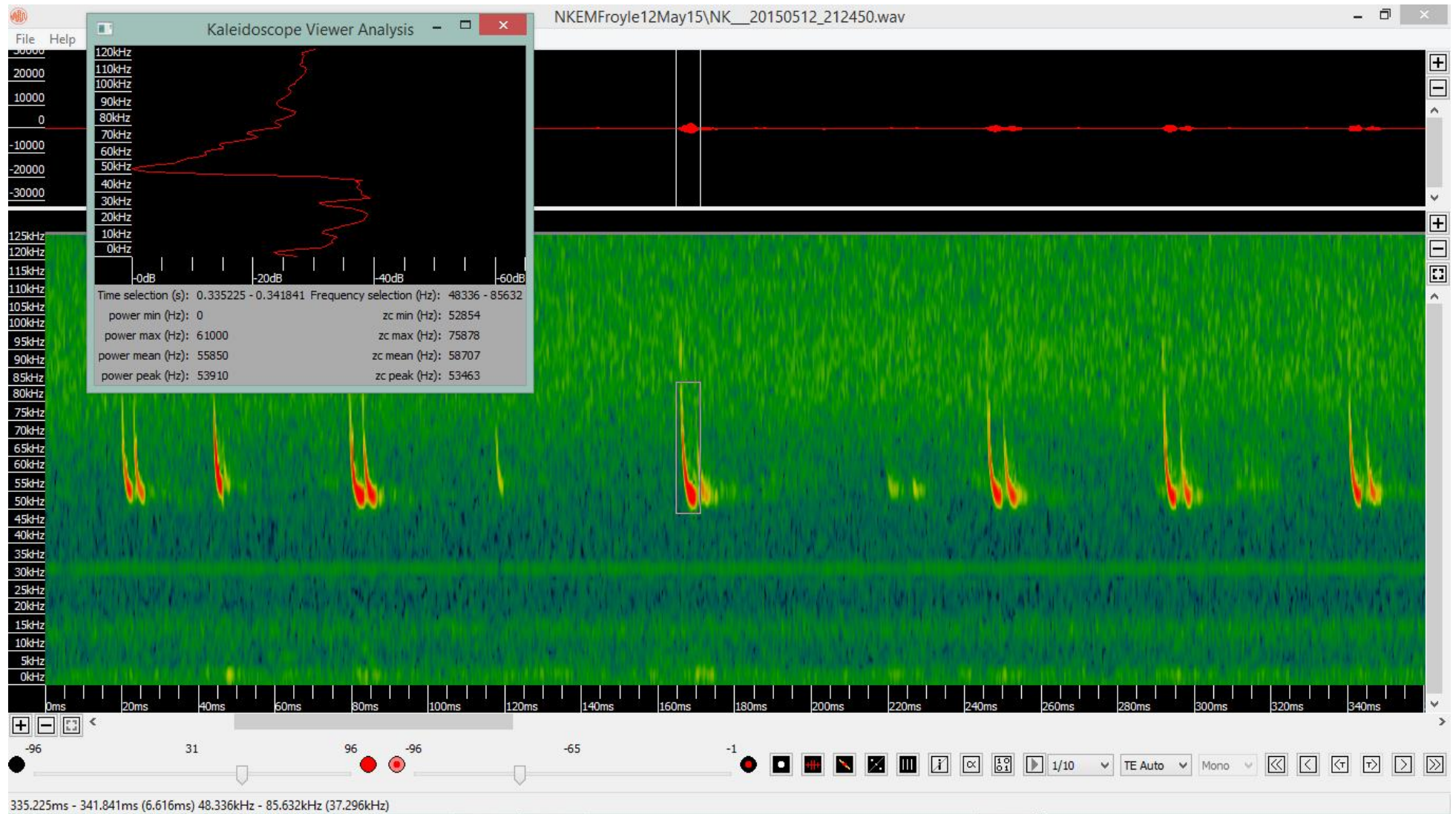


Bentley and Lower Froyle bat walk, 12th May 2015
 Echolocation recordings made by N Knight, using EM3+ bat detector

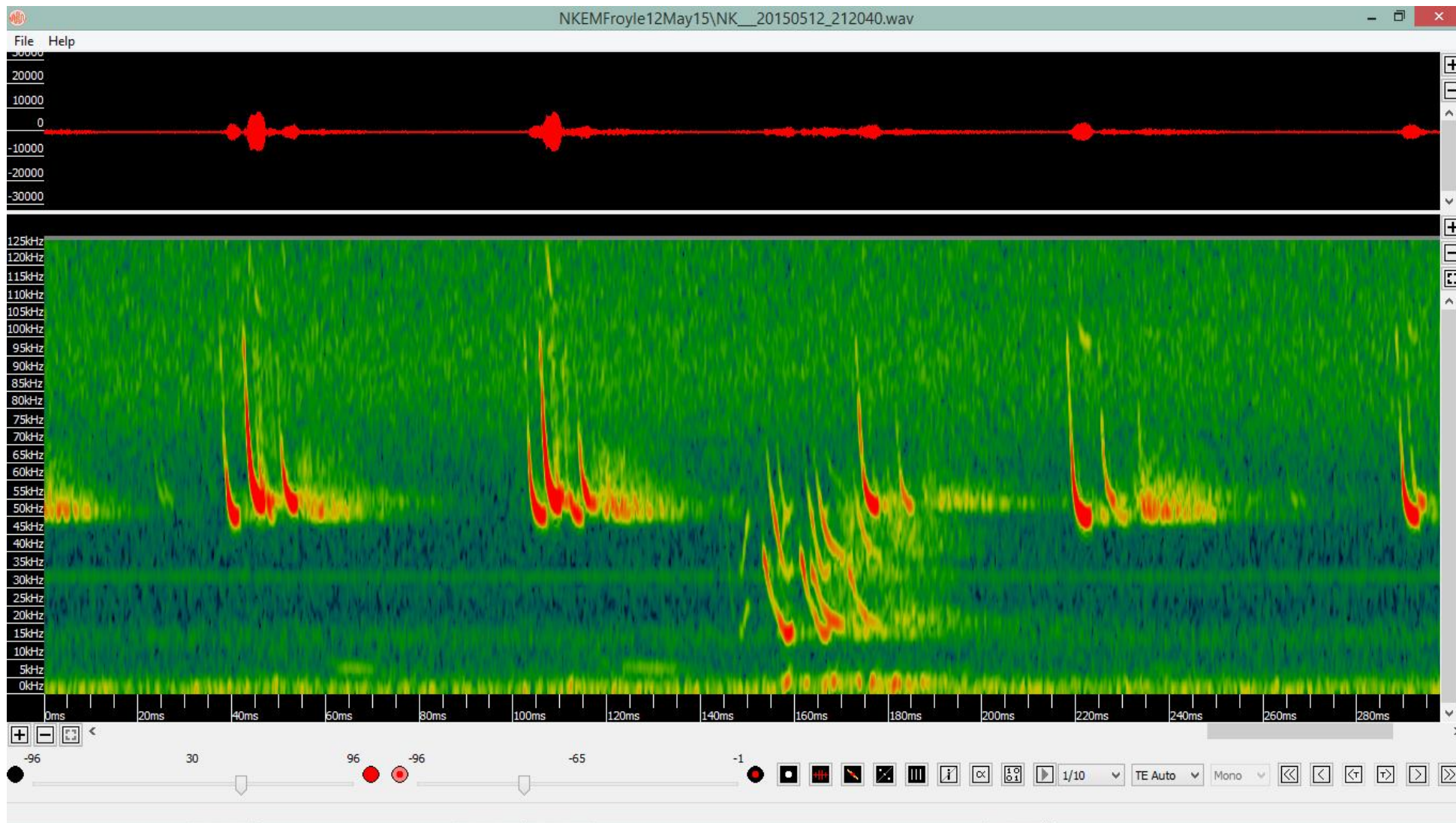
Results summary

time	Location	Grid Reference	Bat ID	Notes
21.20	Anstey Bridge, River Wey, River Road, Bentley	SU785431	common pip + soprano pip	With feeding buzzes.
21.20	Anstey Bridge, River Wey, River Road, Bentley	SU785431	Common pip	With feeding buzzes and social call. Faint 55 pip.
21.21	Anstey Bridge, River Wey, River Road, Bentley	SU785431	common pip + soprano pip	
21.21	Anstey Bridge, River Wey, River Road, Bentley	SU785431	Common pip	With faint 55 pip. With strong echoes and feeding buzz.
21.22	Anstey Bridge, River Wey, River Road, Bentley	SU785431	pip sp.	With feeding buzz.
21.23	Anstey Bridge, River Wey, River Road, Bentley	SU785431	soprano pip + pip sp.	
21.24	Anstey Bridge, River Wey, River Road, Bentley	SU785431	soprano pip	
21.26	Anstey Bridge, River Wey, River Road, Bentley	SU785431	soprano pip + Daubenton's	FM 69 to 39 kHz. Daubenton's seen.
21.26	Anstey Bridge, River Wey, River Road, Bentley	SU785431	soprano pip + Daubenton's	
21.27	Anstey Bridge, River Wey, River Road, Bentley	SU785431	soprano pip + Daubenton's	
21.29	Anstey Bridge, River Wey, River Road, Bentley	SU785431	soprano pip + Daubenton's	
21.30	Anstey Bridge, River Wey, River Road, Bentley	SU785431	soprano pip + Daubenton's	
21.47	Ryebidge lane, Lower Froyle, near T junction	SU760442	Common pip	
22.04	Silvester's farm, Froyle Road, Lower Froyle	SU761442	Common pip	
22.12	Silvester's farm, Froyle Road, Lower Froyle	SU761442	Common pip	
22.16	Pond at Husseys Lane, Lower Froyle	SU764440	Common pip	
22.17	Pond at Husseys Lane, Lower Froyle	SU764440	Common pip	
22.23	Park Lane, Lower Froyle	SU763440	Common pip	
22.26	Park Lane, Lower Froyle	SU763440	Common pip	

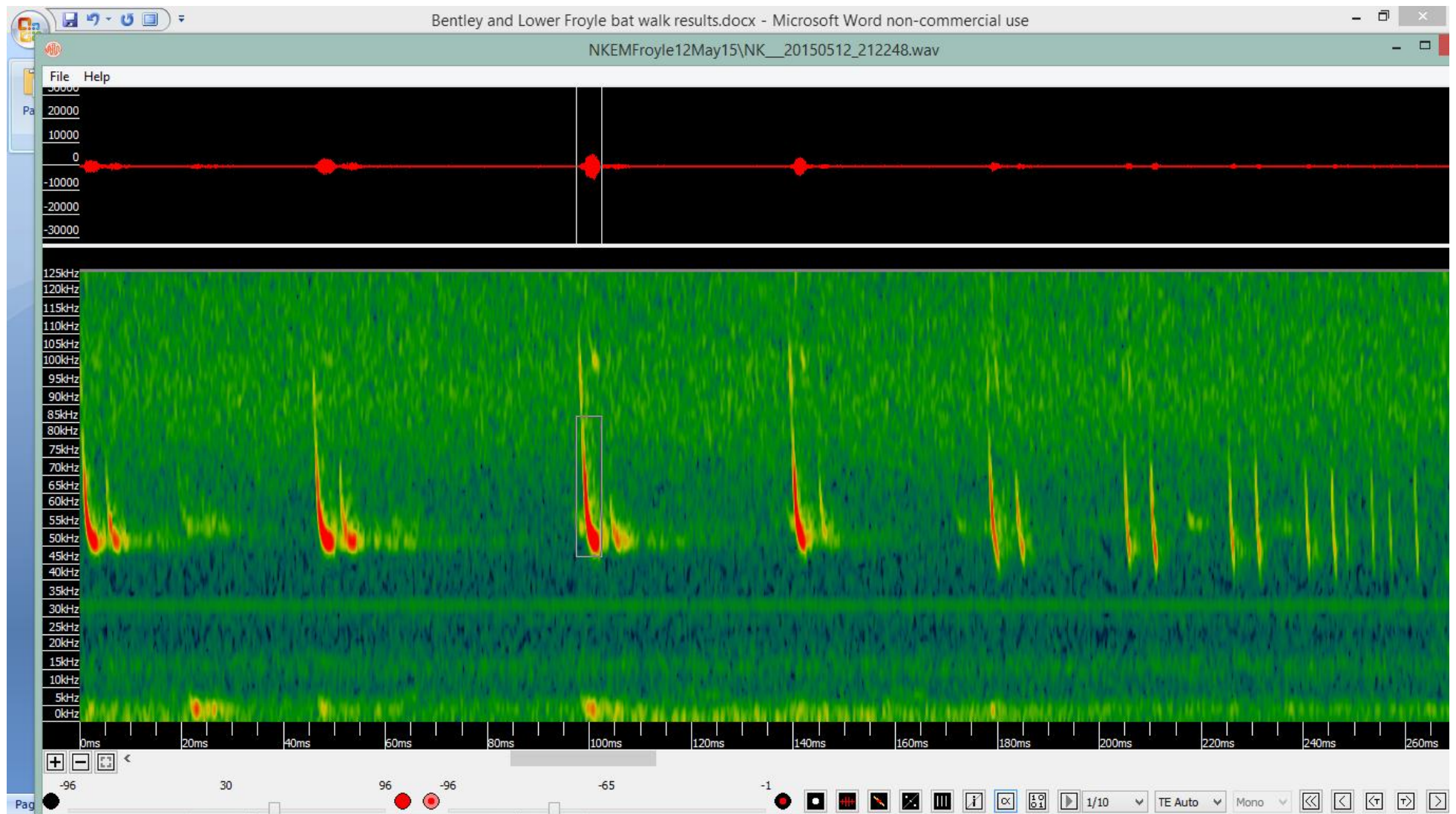
Spectrograms, displayed using Kaleidoscope software:



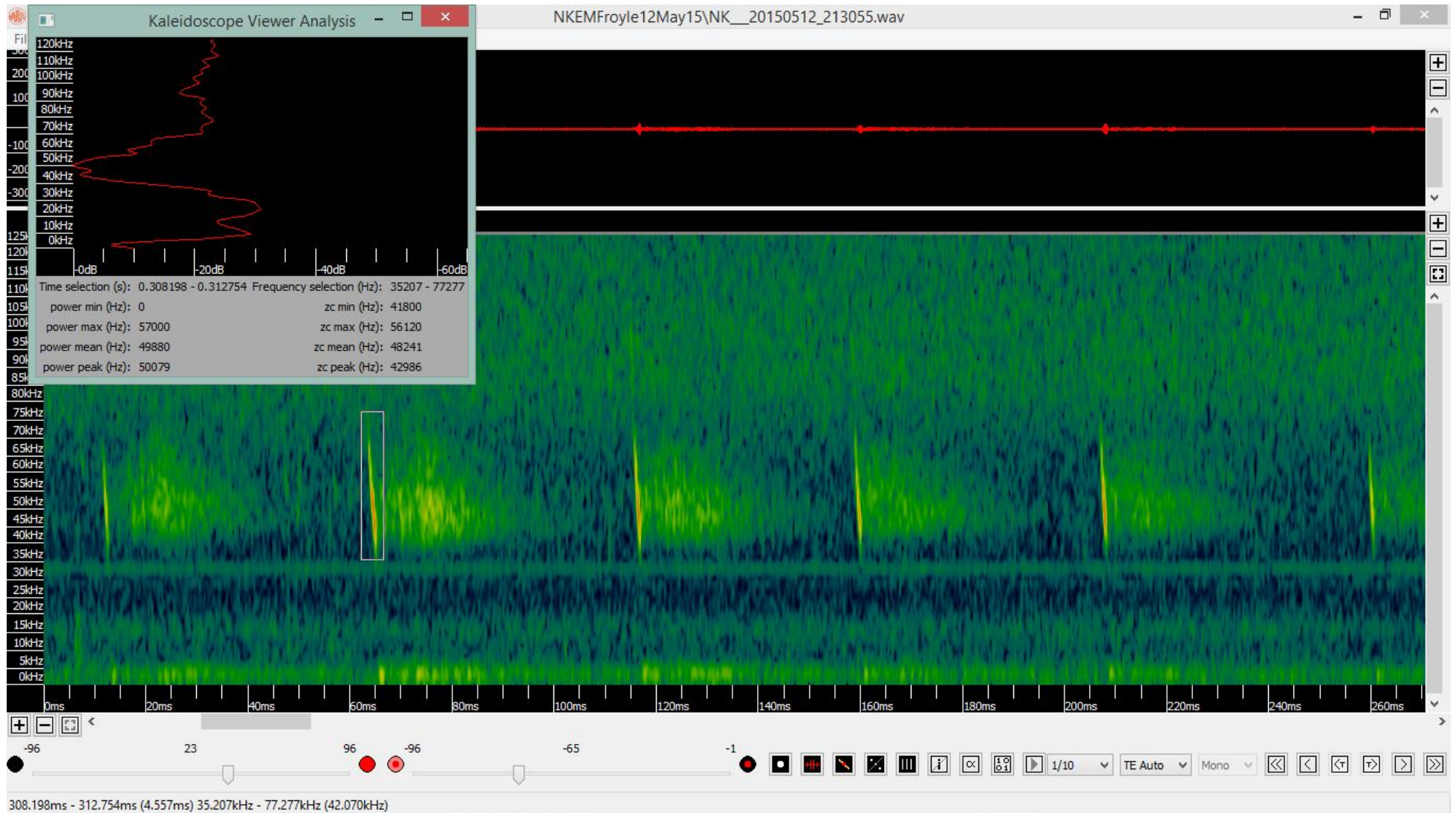
Soprano pipistrelle, with strong echoes. Note 'hockey stick' shape of each pulse (e.g. within rectangle).
Anstey bridge, Bentley at 21.24



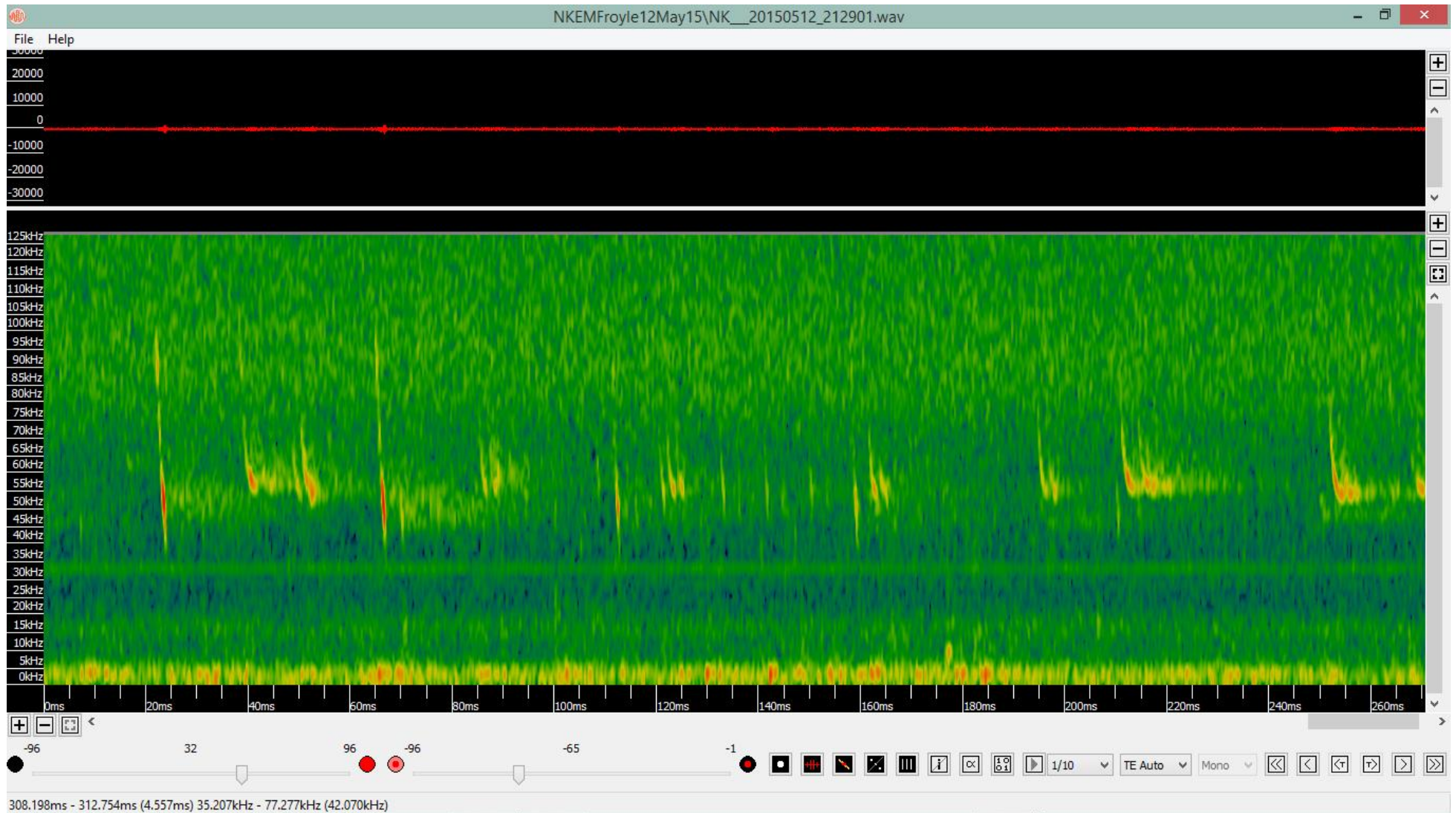
Several pipistrelles, with social call. Anstey bridge, 21.20.



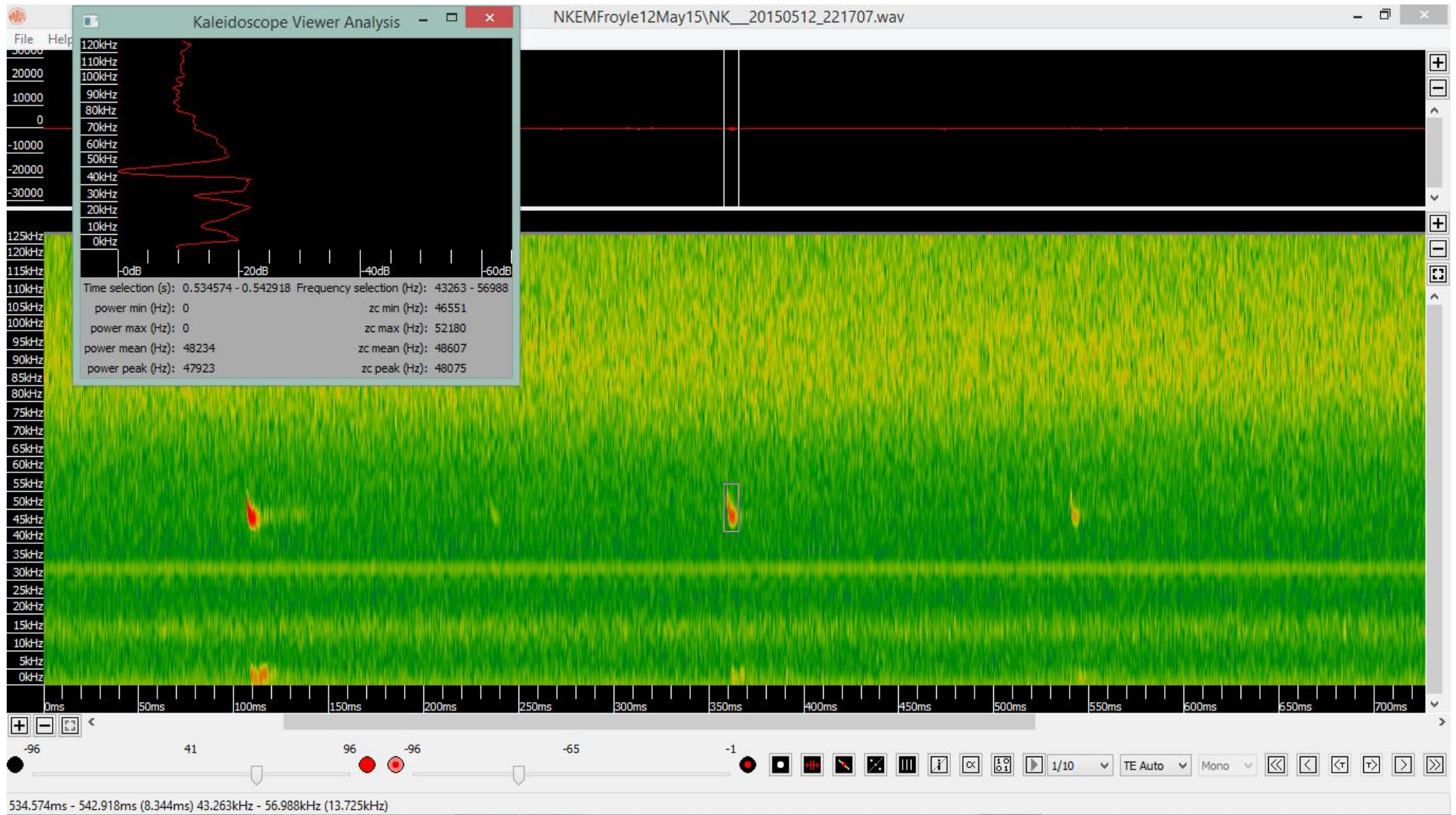
Pipistrelle, with strong echoes, leading into feeding buzz. Anstey bridge, 21.22.



Daubenton's bat. Note simpler, straighter shape of image of each pulse, compared to pipistrelle. Anstey bridge, 21.30.



Daubenton's and soprano pipistrelle. Anstey bridge, 21.29.



Common pipistrelle, rather faint. Pond at Husseys Lane at 22.17.

Nik Knight 15/5/15